

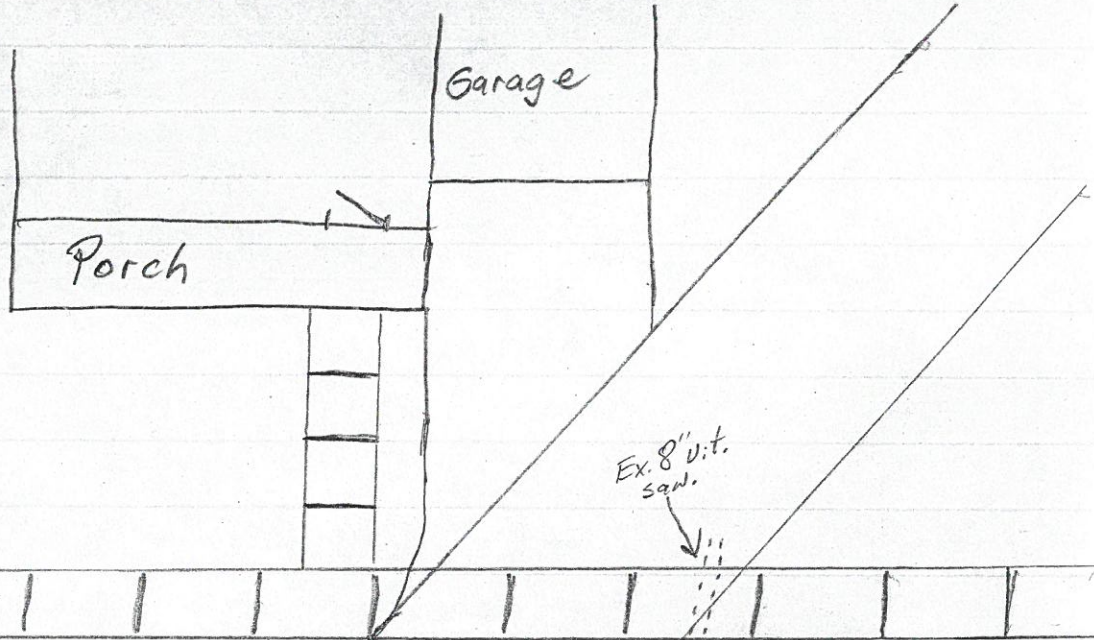
B.M. 683.57  
Red - .37  
I.H. 682.20

Date Installed:  
9-20-01

Scott St. Sewer Separation  
Res# 817

Installed by:  
S.E. Johnson

Inspected by:  
Rex Moll



B/c ↓

Total of 8" SDR<sup>35</sup> pipe  
19' L.F.  
7.75' L.F. (riser)  
26.75' L.F. Total

Ex. Brick  
san. →

24" storm sewer  
→

Main Elev. 667.95  
Hook-up Elev. 667.80

15" san.  
sewer  
←

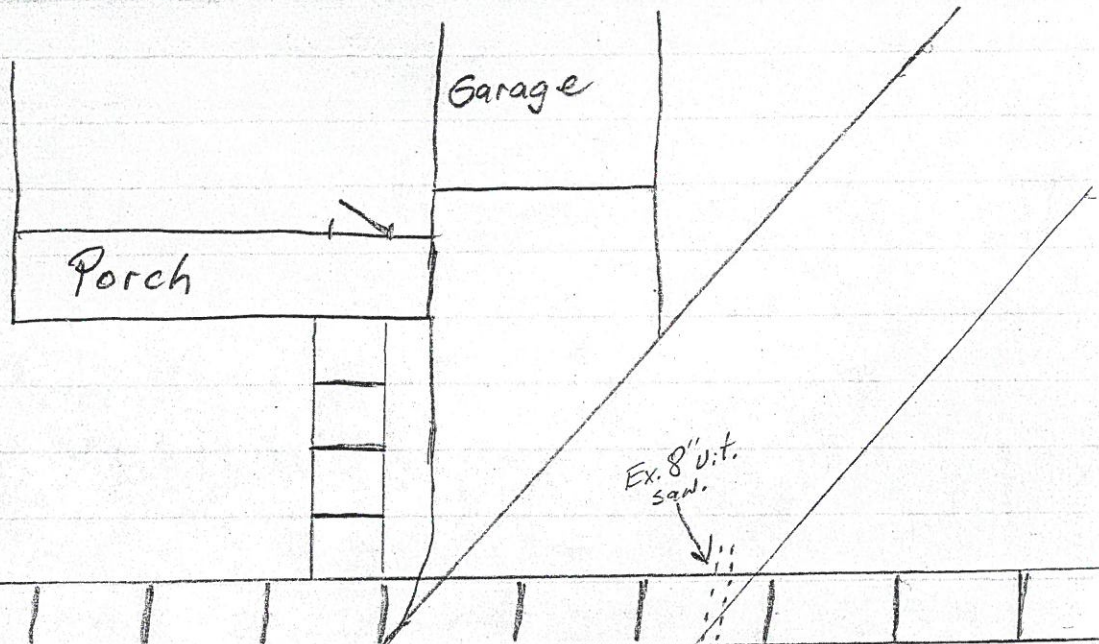
B.M. 683.57  
Rod - .37  
I.H. 682.20

Date Installed:  
9-20-01

Scott St. Sewer Separation  
Res # 817

Installed by:  
S. E. Johnson

Inspected by:  
Rex Moll



B/c ↓

Total of 8" SDR<sup>35</sup> pipe  
19' L.F.  
7.75' L.F. (riser)  
26.75' L.F. Total

Ex. Brick  
San. →

8" Fetnco  
8" C/O  
8.5' Deep  
2-8"-45° Bends

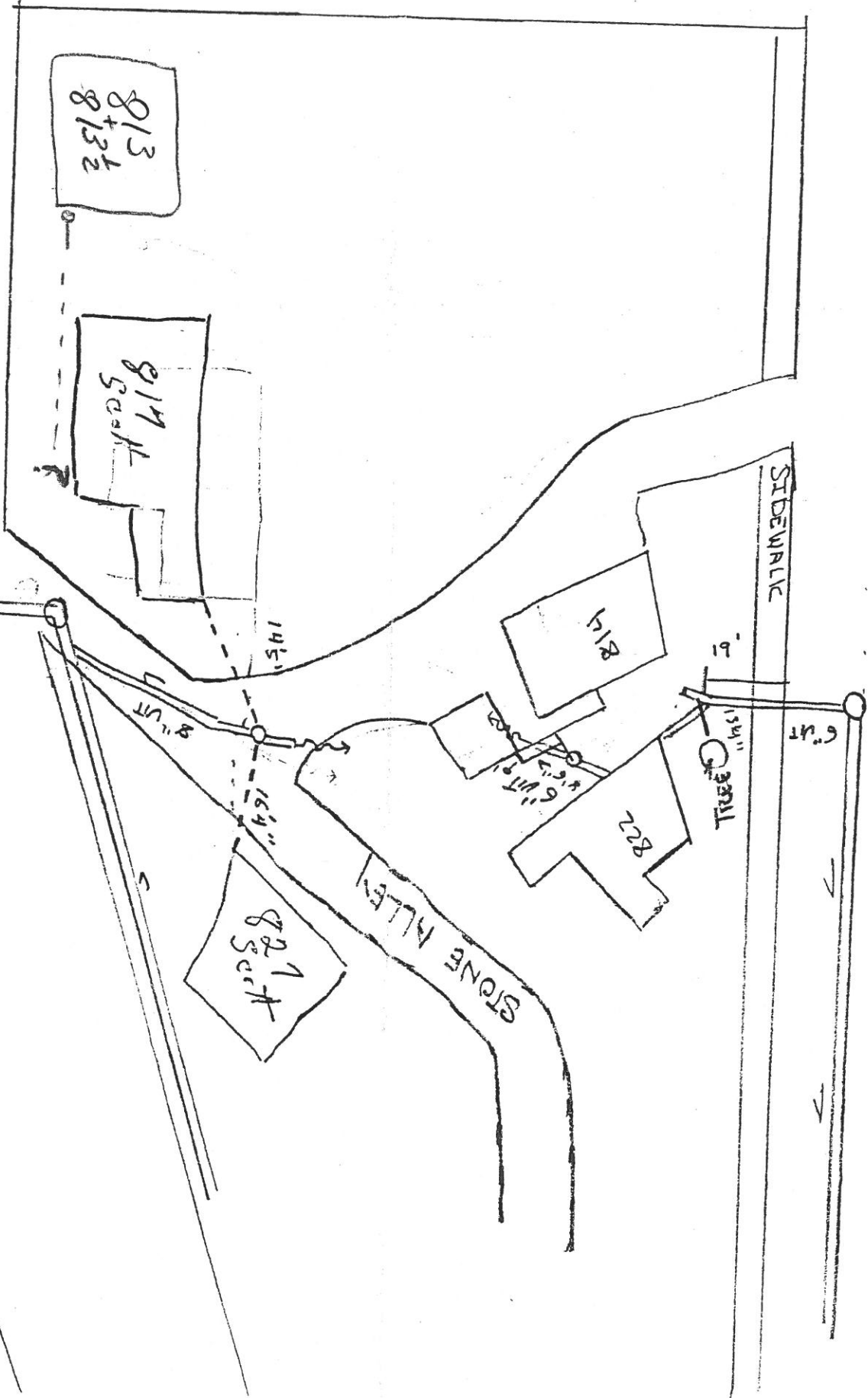
24" storm Sewer  
~ ~ ~ ~ ~ →

Main Elev. 667.95  
Hook-up Elev. 667.80

15" San.  
sewer  
← ~ ~ ~ ~ ~

W. CLINTON ST.

SCOTT ST.



WOODLAWN AVE.

NOTE: UNKNOWN WHERE BOTH

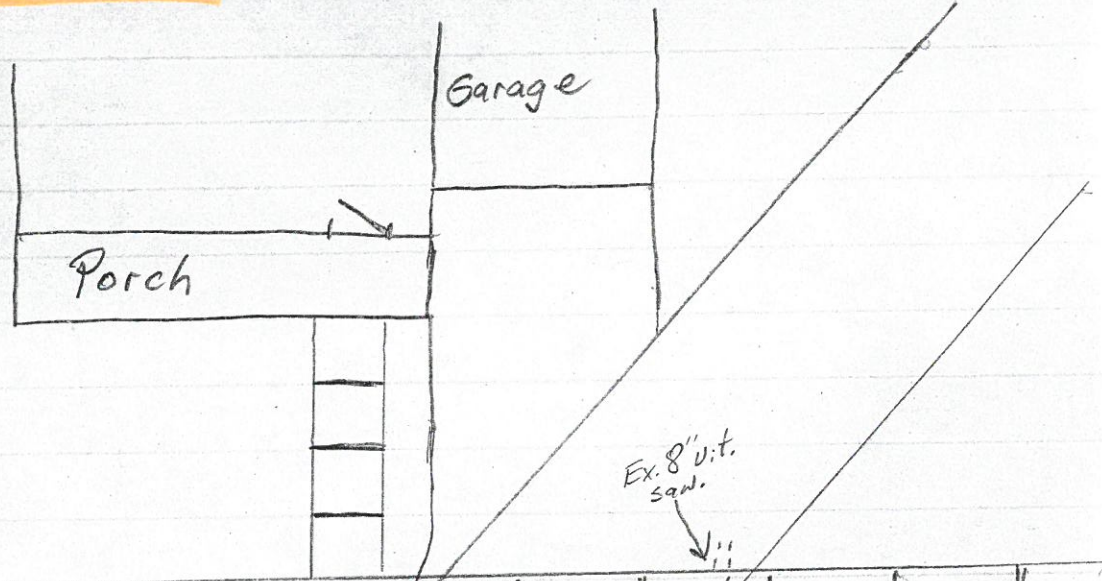
B.M. 683.57  
Rd - .37  
I.H. 682.20

Date Installed:  
9-20-01

Scott St. Sewer Separation  
Res # 817

Installed by:  
S.E. Johnson

Inspected by:  
Rex Moll



B/c ↓

Total of 8" SDR<sup>35</sup> pipe  
19' L.F.  
7.75' L.F. (riser)  

---

26.75' L.F. Total

Ex. Brick  
san. →

24" storm sewer  
~~~~~→

Main Elev. 667.95  
Hook-up Elev. 667.80

15" san.  
sewer  
~~~~~←